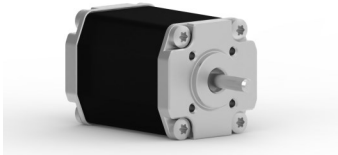


无刷电机--BL25-10, 10W

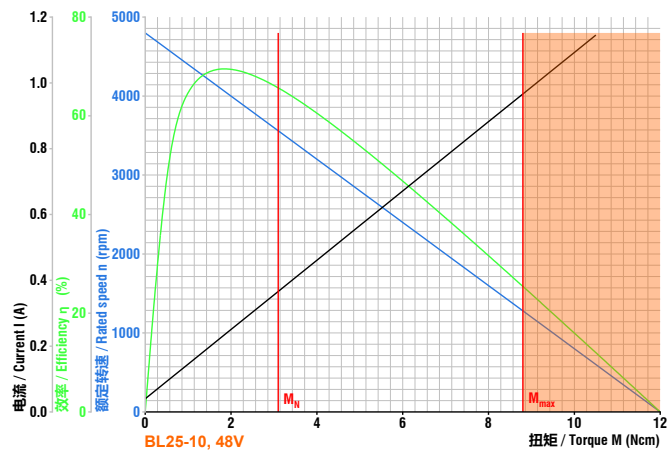


- 适配行星减速箱--Planetary gearbox available
- 适配制动器--Brake available
- 适配控制器--Controller available
- 适配编码器--Encoder available
- 更多客户要求--More request from customer

- ▶ 10瓦, 6极高动态响应三相无刷直流电机
 - ▶ 需要额外的驱动器来运行电机
 - ▶ 可根据需求定制不同电压的绕组
 - ▶ 可根据需求提供不同尺寸的前轴和尾轴
 - ▶ 较高的功率密度和紧凑结构设计
 - ▶ 防护等级为IP50, 可根据需求提供更高的等级
 - ▶ 长寿命, 免维护, 绝缘等级E
- ▶ 10W high dynamic 3-phase brushless DC motor 6-poles
 - ▶ Additional electronics is needed to run this motor
 - ▶ Special voltage windings available on request
 - ▶ Different shaft size available for both sides on request
 - ▶ High power density and compact design.
 - ▶ Protection class IP50, higher class available on request
 - ▶ Longer lifetime, maintenance-free, insulation class E

48V数据和曲线--Data and curve of 48V

额定电压 Nominal voltage	48 VDC	转矩常数 Torque constant	9.5 Ncm A ⁻¹
额定电流 Nominal current	0.35 A	终端电阻 Terminal resistance	33.4 Ω
额定转矩 Nominal torque	3.1 Ncm	终端电感 Terminal inductance	10 mH
额定转速 Nominal speed	3600 rpm	峰值电流 Peak current(2 sec.)	1.1 A
堵转扭矩 Stall torque	12 Ncm	转子惯量 Rotor inertial	0.8 gcm ²
空载转速 No load speed	4800 rpm	电机重量 Weight of motor	0.07 kg



尺寸为毫米-Dimensions in mm

